

The background image shows a man in a dark blue suit and light grey trousers pushing a shopping cart filled with groceries. He is walking towards a building entrance with large glass doors. A child in a blue jacket and pink backpack is also entering the building. The building has a dark, textured facade. The overall scene is set during the day with soft lighting.

SIMPLER HOMECOMINGS

MAKING EVERY DAY EASIER FOR EVERYONE

Your home should be a place where you can relax and forget the stresses of everyday life. Simple things like getting through the door, letting in visitors, or arranging deliveries should be easy and convenient. This is where technology comes in. With KONE Residential Flow, you can say goodbye to struggling with doors or keys, and missing important announcements or deliveries. Say hello to everyday life made easier.

- Open doors before you reach them – your smartphone is your key
- Feel like a VIP in your own building – once you're inside, the elevator is called automatically to take you to your home floor
- Never miss important announcements – stay up to date via your smartphone and infoscreens
- Welcome visitors wherever you are – use your smartphone to greet people and grant access
- Say goodbye to lost keys – provide family members or friends with temporary electronic keys instead
- Easy to order, quick to install, and simple to maintain – we take care of everything

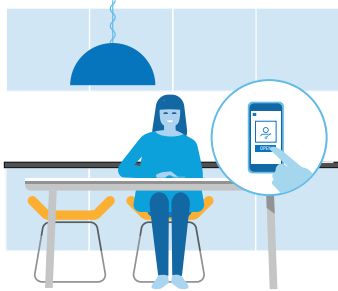


HOW KONE RESIDENTIAL FLOW WORKS



KONE ACCESS

- Unlock and open your building's main door automatically
- Travel to your home floor without touching a single button



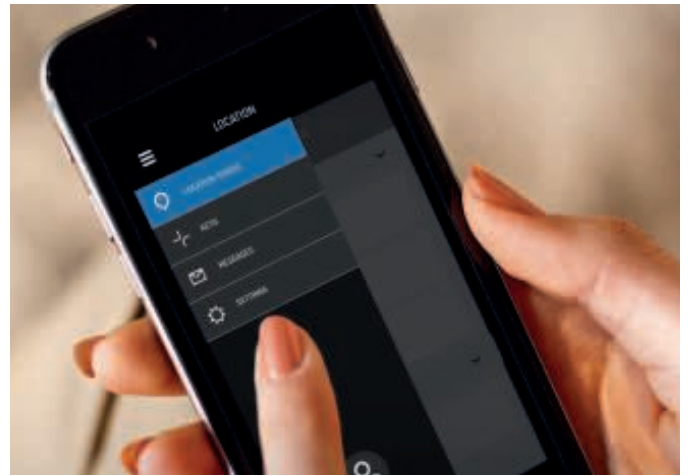
KONE VISIT

- Greet visitors via your home intercom or smartphone
- Grant access with the touch of a button, wherever you are



KONE INFORMATION

- Check important building announcements on your smartphone
- Stay up to date with building announcements, weather, or public transport timetables on infoscreens



THE KONE FLOW™ APP – YOUR NEW FRONT DOOR KEY

With KONE Residential Flow, your smartphone becomes your new front door key, with everything you need combined in the easy-to-use KONE Flow app. You can open doors, grant access to visitors, send out keys to family and friends, and even check building announcements.

A HELPING HAND FOR FACILITY MANAGERS

- Easily share important building updates from a single screen
- Update residents' information with just a few mouse clicks
- Save time and hassle with digital key management

FOUR STEPS TO AN EASIER LIFE, EVERY DAY

- 1 Contact KONE
- 2 Our salesperson visits your building to evaluate your needs
- 3 We create a specification and cost estimate for you
- 4 Once you're happy with everything, you place an order and we take care of the rest

KONE provides innovative and eco-efficient solutions for elevators, escalators, automatic building doors and the systems that integrate them with today's intelligent buildings.

We support our customers every step of the way; from design, manufacturing and installation to maintenance and modernization. KONE is a global leader in helping our customers manage the smooth flow of people and goods throughout their buildings.

Our commitment to customers is present in all KONE solutions. This makes us a reliable partner throughout the life cycle of the building. We challenge the conventional wisdom of the industry. We are fast, flexible, and we have a well-deserved reputation as a technology leader, with such innovations as KONE MonoSpace®, KONE NanoSpace™ and KONE UltraRope®.

KONE employs close to 52,000 dedicated experts to serve you globally and locally.

KONE CORPORATION

Head office

Kartanontie 1
P.O. Box 8
FI-00331 Helsinki
Finland
Tel. +358 (0)204 751

Corporate offices

Keilasatama 3
P.O. Box 7
FI-02151 Espoo
Finland
Tel. +358 (0)204 751

www.kone.com